



**SCHEME FOR DESIGNATING DOMESTIC  
CONFORMITY ASSESSMENT BODIES  
AND CERTIFICATION BODIES  
FOR  
CONFORMITY ASSESSMENT  
AND CERTIFICATION OF  
TELECOMMUNICATION EQUIPMENT**

**ISSUE 1  
NO. TEC/DES-01/01.AUG.2008  
© TEC**

**TELECOMMUNICATION ENGINEERING CENTRE  
DEPARTMENT OF TELECOMMUNICATION  
GOVERNMENT OF INDIA  
KHURSHID LAL BHAVAN, JANPATH  
NEW DELHI 110001, INDIA**



All Rights Reserved and no part of this publication may be reproduced, stored in a retrieval system, or transmitted, in any form or by any means, electronic, mechanical, photocopying, recording or otherwise without written permission from the Telecommunication Engineering Centre, New Delhi



**SCHEME FOR DESIGNATING DOMESTIC CONFORMITY  
ASSESSMENT BODIES AND CERTIFICATION BODIES  
FOR  
CONFORMITY ASSESSMENT AND CERTIFICATION OF  
TELECOMMUNICATION EQUIPMENT**

**CONTENTS**

1.0	Introduction .....	1
2.0	References .....	1
3.0	Definitions .....	1
4.0	Conceptual Scheme of Designation .....	3
5.0	Designating Authority .....	3
6.0	Scope of Designation .....	4
7.0	Scope of Accreditation .....	4
8.0	Eligibility .....	4
9.0	Application for Designation .....	5
10.0	Approval .....	6
11.0	Obligations of Designated CAB .....	6
12.0	Obligations of Designated CB .....	7
13.0	Reference to Designation Status .....	8
14.0	Post-designation Surveillance .....	9
15.0	Suspension or Withdrawal of Designation .....	9
16.0	Amendment to the Scheme .....	9
	Annexure 1 - Application for Designation of CAB and CB .....	10
	Annexure 2 - List of TEC's Technical Specifications .....	11
	Annexure 3 - Checklist for Technical Competence of CAB .....	12
	Annexure 4 - Checklist for Technical Competence of CB .....	13



## SCHEME FOR DESIGNATING DOMESTIC CABs & CBs

### 1.0 INTRODUCTION

- 1.1 Telecom Engineering Centre (TEC) under the Department of Telecommunication (DoT) designates domestic Conformity Assessment Bodies (CABs) and Certification Bodies (CBs) for carrying out conformity assessment and certification of telecommunication equipment in accordance with TEC's technical specifications and standards.
- 1.2 It also designates domestic CABs and CBs for carrying out conformity assessment and certification of telecommunication equipment in accordance with requirements of MRA Partners.
- 1.3 This document outlines the process to be followed and details the conditions and requirements to be fulfilled by the domestic CABs and CBs seeking designation to perform conformity assessment and certification of telecom equipment.

### 2.0 REFERENCES

- 2.1 ISO/IEC Guide 2: Standardization and related activities – General vocabulary
- 2.2 ISO/IEC 17025:2005 General requirements for the competence of testing and calibration laboratories
- 2.3 ISO/IEC Guide 65:1996 General requirements for bodies operating product certification systems

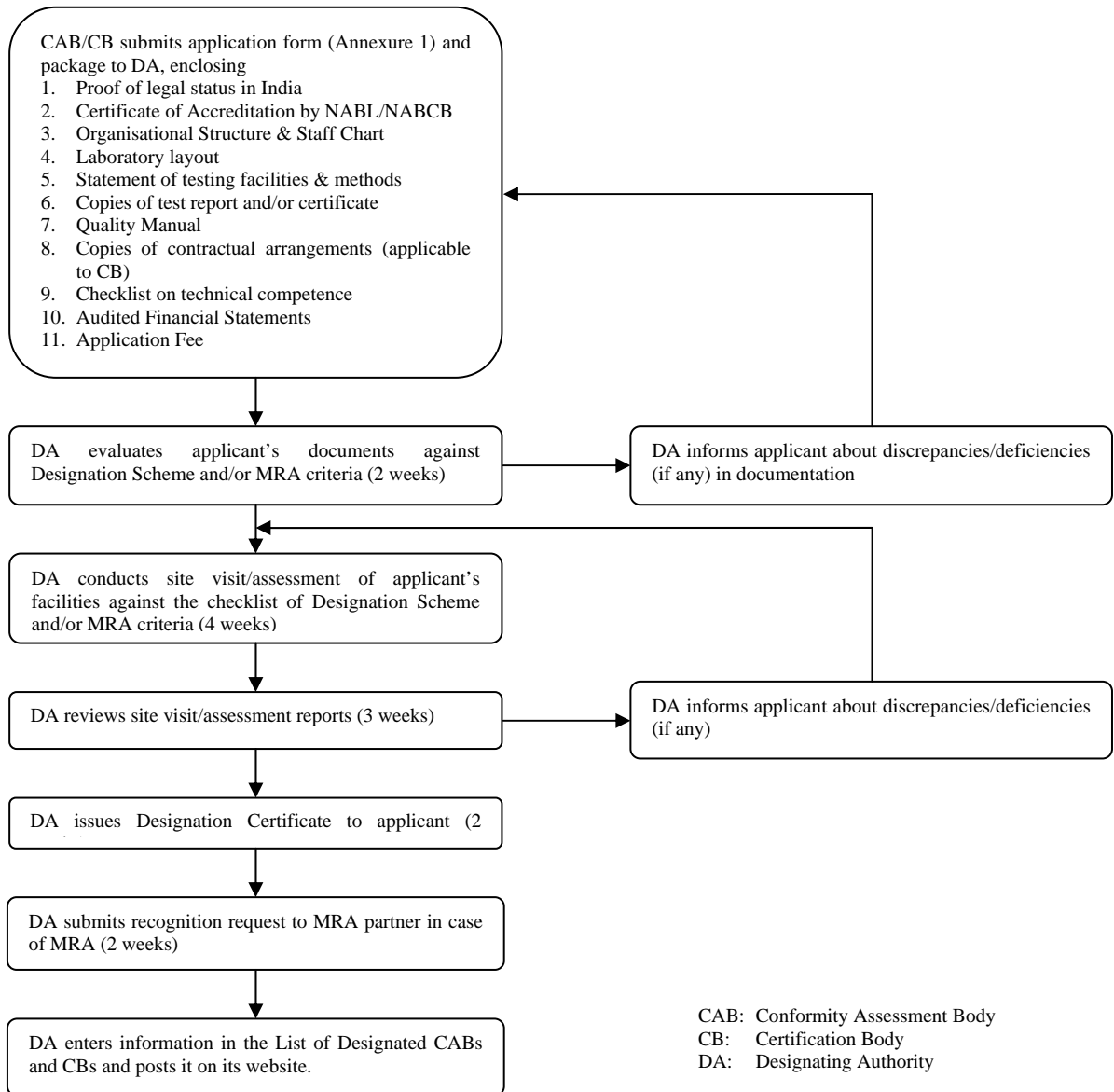
### 3.0 DEFINITIONS

- 3.1 All general terms concerning standards and conformity assessment used in this Chapter shall have the meaning given in the definitions contained in the International Organisation for Standardisation/International Electro-technical Commission (ISO/IEC) Guide 2: 2004 "Standardization and related activities – General vocabulary" published by the ISO and IEC, and unless the context otherwise requires.
- 3.2 **Accept** means the use of the results of conformity assessment activities as a basis for regulatory actions such as approvals, licences, registrations and post-market assessments of conformity assessment.
- 3.3 **Accreditation Body** means an authority to conduct and administer an accreditation system that grants accreditation to conformity assessment bodies or certification bodies for conformity assessment of telecommunication equipment.
- 3.4 **Administrative Arrangements** mean publicly available procedures or legal arrangements within a Party's jurisdiction which have impact on the conformity assessment procedures for telecommunication equipment within the scope of an MRA.

- 3.5 **Conformity Assessment** means any activity concerned with determining directly or indirectly whether products, manufacturers or processes fulfil relevant standards and/or specifications to meet relevant mandatory requirements detailed in the respective Party's mandatory requirements. Typical examples of conformity assessment activities are sampling, testing, inspection, evaluation, verification, certification, registration, accreditation and approval, as well as any of their combinations.
- 3.6 **Certification Body (CB)** means a body that issues a conformance certificate and may also conduct conformity assessment activities.
- 3.7 **Conformity Assessment Body (CAB)** means a body that conducts conformity assessment activities.
- 3.8 **Designation** means the authorisation by a Party's designating authority of its conformity assessment body to undertake specified conformity assessment activities pursuant to the mandatory requirements of the other party.
- 3.9 **Designated CAB** means a conformity assessment body designated by DA.
- 3.10 **Designated CB** means to a certification body designated by DA.
- 3.11 **Designating Authority (DA)** means a body established in the territory of a Party with the authority to designate, monitor, suspend or withdraw designation of conformity assessment bodies to conduct conformity assessment activities within its jurisdiction.
- 3.12 **Mandatory Requirements** means a Party's applicable laws, regulations and administrative provisions, including licensing conditions;
- 3.13 **NABCB** stands for National Accreditation Board for Certification Bodies, New Delhi, India, under QCI.
- 3.14 **NABL** stands for National Accreditation Board for Testing and Calibration Laboratories, New Delhi, India.
- 3.15 **Party** means DoT or MRA partner.
- 3.16 **QCI** stands for Quality Council of India, New Delhi, India.
- 3.17 **Regulatory Authority** means an entity that exercises a legal right to determine the mandatory requirements, control the import, use or supply of products within a Party's territory and may take enforcement action to ensure that products marketed within its territory comply with that Party's mandatory requirements including assessments of manufacturers/ manufacturing processes of products.
- 3.18 **Generic Requirements (GRs), Technical Regulations, Technical Specifications, Standards** means those technical requirements, legislative and regulatory provisions, and administrative arrangements that a Party has specified pertaining to the testing and certification of equipment in which compliance is mandatory.

- 3.19 **Telecommunication equipment** or **equipment** means all telecommunication switching, transmission and access line or wireless equipment.
- 3.20 **Test facility** means a facility, including independent laboratories, manufacturers' own test facilities, or government testing bodies that may be designated by DA.

#### 4.0 CONCEPTUAL SCHEME OF DESIGNATION



Schematic Diagram of the Process for Designation of CABs & CBs

#### 5.0 DESIGNATING AUTHORITY

- 5.1 TEC is the Designating Authority (DA) for designating Conformity Assessment Bodies (CABs) and Certification Bodies (CB) in India, for conformity assessment and certification of telecommunication equipments against TEC's technical specifications and standards.

- 5.2 CABs and CBs designated by TEC may be recognized by DA of a foreign country for conformity assessment and certification against technical regulations, technical specifications, and standards of that country as per the conditions of Mutual Recognition Agreement (MRA), if any. Correspondingly, TEC is the DA for recognizing the designated CABs and CBs of foreign countries, having MRA with India, for conformity assessment and certification as per TEC Technical specifications and standards.

## **6.0 SCOPE OF DESIGNATION**

- 6.1 Application for designation is open to any conformity assessment body and/or certification body which conducts its business of conformity assessment and certification in India. CABs duly accredited by NABL and CBs accredited by NABCB, may apply for designation. The scope of designation by DA is limited to the scope for which accreditation is granted by NABL/NABCB against TEC's technical specifications and standards or other Party's technical requirements.

## **7.0 SCOPE OF ACCREDITATION**

- 7.1 CABs shall be accredited by NABL, in accordance with ISO/IEC 17025:2005, to carry out tests for verifying conformance to one or more stipulated requirements for telecom equipment.
- 7.2 CBs shall be accredited by NABCB in accordance with ISO/IEC Guide 65:1996, to certify telecom equipment conforming to one or more stipulated requirements, on the basis of its test reports or test reports of accredited CABs.
- 7.3 The scope of testing and certification shall be limited to core-testing capabilities, knowledge and expertise in evaluating test data and reports, on the conformance to stipulated requirements as detailed in Annexure 3 and 4.

## **8.0 ELIGIBILITY**

- 8.1 To be eligible for designation as CAB, the applicant shall
- a. be an entity legally identifiable and located in India;
  - b. be accredited by NABL in accordance with ISO/IEC 17025:2005 for CAB, in the relevant areas of stipulated requirements for telecom equipment.
  - c. have expert knowledge of all the applicable technical, administrative, and regulatory requirements for the equipment.
  - d. have sufficient capital and financial resources to maintain viable operations as a CAB.
  - e. have the knowledge, capability, technical competence and equipment to perform the tests for conformity to stipulated requirements for the equipment.
  - f. have no interest whatsoever in any business to test any product or carry on testing in an unfair or biased manner, for which it seeking designation
  - g. satisfy all criteria required for its recognition under the relevant MRA, if any.
  - h. provide all desired information or documents as required by DA.
- 8.2 To be eligible for designation as CB, the applicant shall
- a. be an entity legally identifiable and located in India;



- b. be accredited by NABCB in accordance with ISO/IEC Guide 65:1996 for CB, in the relevant area of stipulated requirements for telecom equipment.
- c. be accredited by NABL in accordance with ISO/IEC 17025:2005 for CAB, in the relevant areas of stipulated requirements for telecom equipment, and/or have arrangements with other designated CABs.
- d. have expert knowledge of all the applicable technical, administrative, and regulatory requirements for the equipment.
- e. have sufficient capital and financial resources to maintain viable operations as a CAB and CB.
- f. have the knowledge, capability, technical competence and equipment to perform the tests and certification for conformity to stipulated requirements for the equipment.
- g. have no interest whatsoever in any business to test any product or carry on testing in an unfair or biased manner, for which it seeking designation
- h. satisfy all criteria required for its recognition under the relevant MRA, if any.
- i. provide all desired information or documents as required by DA.

## 9.0 APPLICATION FOR DESIGNATION

9.1 Duly filled Application Package (Annexure 1) for designation should be sent to

ADG (DA),  
Telecommunication Engineering Centre, K. L. Bhavan, Janpath,  
Gate No. 5, Khurshid Lal Bhavan, New Delhi-110001.

9.2 Application Package for Designation of CAB includes

- a. Documents showing proof as an identifiable legal entity in India.
- b. Accreditation Certificate as CAB from NABL indicating the scope of accreditation.
- c. Organisational Structure and Staffing Chart.
- d. Laboratory Layout.
- e. Details of capability and technical competence for testing each stipulated requirement for the equipment.
- f. Sample copy of test report(s) to be issued.
- g. Quality Manual.
- h. Compliance to checklist (Annexure 3) to show that the CAB meets the stipulated requirements for designation.
- i. Audited financial statements for 3 years.
- j. Non-refundable fee of Rs. 1,00,000/- to be paid through Demand Draft payable to "AO (Cash), TEC, New Delhi".

9.3 Application Package for Designation of CB includes

- a. Documents showing proof as an identifiable legal entity in India.
- b. Accreditation Certificate as CB from NABCB, along with Accreditation Certificate as CAB from NABL indicating the scopes of accreditations.
- c. Copies of contractual arrangements with other designated CABs, if applicable.
- d. Organisational Structure and Staffing Chart.
- e. Laboratory Layout.
- f. Details of capability and technical competence for testing and certification of each stipulated requirement for the equipment.
- g. Sample copies of test report(s) and certificate(s) to be issued.

- h. Quality Manual;
- i. Compliance to checklist (Annexure 3 & 4) to show that the CB meets the stipulated requirements for designation.
- j. Audited financial statements for 3 years.
- k. Non-refundable fee of Rs. 1,00,000/- to be paid through Demand Draft payable to "AO (Cash), TEC, New Delhi".

## **10.0 APPROVAL**

- 10.1 The steps involved in designation are enlisted in the Schematic Diagram of the Process for Designation of CABs & CBs.
- 10.2 Applicant shall make necessary arrangements for DA's authorised representatives for their visit to his laboratories or premises for assessment.
- 10.3 After completion of assessment, Designation Certificate will be issued if DA is satisfied that the applicant complies with the stipulated requirements.
- 10.4 Designation by DA does not imply the acceptance by DA of any responsibility for the services provided by the Designated CAB/CB.
- 10.5 Time schedules indicated for various activities are indicative only and shall not be considered as a matter of rule or right for the applicant. They shall not be binding on DA, as time taken in completion of various processes depends upon nature and circumstances of the case.
- 10.6 Designation shall be valid for a period of three (3) years. Application for renewal has to be submitted 6 months before the expiry of the certificate. Suspended or withdrawn designation shall NOT be renewed during the suspended or withdrawn period. Validity is subject to the continued accreditation by NABL/NABCB. The fee for renewal shall be the same as for initial designation.

## **11.0 OBLIGATIONS OF DESIGNATED CAB**

- 11.1 It shall ensure that it maintains its accreditation status from NABL.
- 11.2 It shall follow the stipulated procedures, rules and policies laid down by DA or MRA partner for testing and evaluation.
- 11.3 Unless specifically approved by DA or MRA partner it shall not conduct testing of equipment prohibited in the respective country.
- 11.4 It shall fully indemnify DA from and against all liabilities, damages, claims, costs, and expenses incurred or sustained by DA as a result of any action taken or omitted by DA relating to the process of designation.
- 11.5 It shall comply with DA's or MRA partner's terms and conditions for designation and recognition as modified from time to time.
- 11.6 It shall have a record system which shall have a retention period of at least 5 years for documents related to the equipment testing. It shall maintain all the relevant documents including list of products submitted for testing, product-wise testing and

evaluation reports. These documents shall be produced before the DA within seven days, as and when required.

- 11.7 If during post-testing surveillance of tested equipment, it comes to know that the equipment no longer complies with the stipulated requirements, it shall immediately notify the concerned applicant, DA, and/or MRA partner. It shall also provide a follow-up report within thirty days of the action taken by the concerned applicant, to rectify the situation.
- 11.8 It shall notify the DA in writing of occurrence of any of the following incidence within 2 weeks of its occurrence
  - a. cessation of its business of conformity assessment for which it is Designated or accredited
  - b. changes in its legal, commercial, or organisational status
  - c. changes which may affect continuing compliance with any of the criteria or requirement specified by DA or MRA partner.
  - d. change of premises
- 11.9 It shall provide access to DA's authorised representative in its laboratory or other premises to allow him to observe and assess the testing procedures. The CAB shall bear all reasonable costs and expenses incurred by DA's representative on this account.

## **12.0 OBLIGATIONS OF DESIGNATED CB**

- 12.1 It shall ensure that it maintains its accreditation status from NABL and NABCB.
- 12.2 It shall follow the stipulated procedures, rules and policies laid down by DA or MRA partner for testing, evaluation and certification.
- 12.3 Unless specifically approved by DA or MRA partner it shall not conduct testing and certification of equipment prohibited in the respective country.
- 12.4 It shall fully indemnify DA from and against all liabilities, damages, claims, costs, and expenses incurred or sustained by DA as a result of any action taken or omitted by DA relating to the process of designation.
- 12.5 It shall comply with DA's or MRA partner's terms and conditions for designation and recognition as modified from time to time.
- 12.6 It shall have a record system which shall have a retention period of at least 5 years for documents related to the equipment testing and certification. It shall maintain all the relevant documents including list of products submitted for testing, product-wise testing and evaluation reports, and issued certificates. These documents shall be produced before the DA within seven days, as and when required.
- 12.7 If during post-certification surveillance of certified equipment, it comes to know that the equipment no longer complies with the stipulated requirements, it shall immediately notify the concerned applicant, DA, and/or MRA partner. It shall also provide a follow-up report within thirty days of the action taken by the concerned applicant, to rectify the situation.

- 12.8 It shall notify the DA in writing of occurrence of any of the following incidence within 2 weeks of its occurrence
- a. cessation of its business of conformity assessment for which it is Designated or accredited
  - b. changes in its legal, commercial, or organisational status
  - c. changes which may affect continuing compliance with any of the criteria or requirement specified by DA or MRA partner.
  - d. change of premises
- 12.9 It shall provide access to DA's authorised representative in its laboratory or other premises to allow him to observe and assess the testing and certification procedures. The CAB shall bear all reasonable costs and expenses incurred by DA's representative on this account.
- 12.10 For equipment certification, it shall take following application package from the applicant
- a. An application form
  - b. DA's/MRA partner's specification checklist.
  - c. Test reports of equipment, conforming to the stipulated requirements, from Designated CAB.
  - d. Four colour photographs capturing front, rear, side views, and product label of the equipment which shows trade and product name.
  - e. A set of technical documents consisting of a general description of the equipment, technical data, facilities supported by the equipment, sales brochures, and other related document.
- 12.11 In case the services of subcontracting designated CABs are taken, it shall be responsible for the tests conducted by the latter.
- 12.12 After issuing a certificate of conformity, a copy shall be submitted to DA.
- 12.13 It shall publish and maintain a list of certificates.
- 12.14 It shall not grant
- a. waiver of conformity to any of the stipulated requirements.
  - b. change in ownership of certificate.
  - c. certificate to equipment that does not have the published standards from DA or MRA partner.

### **13.0 REFERENCE TO DESIGNATION STATUS**

- 13.1 Designated CABs/CBs may advertise their designation status with regard to standards or parts thereof which are included in the scope of designation.
- 13.2 The advertisement should not imply, or otherwise suggest that DA or MRA Partner has endorsed the product or imply that the designated CAB/CB is an agent or representative of DA or MRA Partner.
- 13.3 CABs/CBs whose designations have been suspended or withdrawn for any reason, shall discontinue advertisement of their designated status and not make any misleading statements regarding their designation status.

#### **14.0 POST-DESIGNATION SURVEILLANCE**

- 14.1 As and when required, DA shall conduct surveillance assessments and other non-routine assessments on the Designated CABs/CBs to ensure that standards of practices are maintained as well as to investigate complaints made against them.

#### **15.0 SUSPENSION OR WITHDRAWAL OF DESIGNATION**

- 15.1 DA shall suspend or withdraw the designation of a CAB/CB if
- a. it's accreditation is withdrawn.
  - b. it is found that the CAB/CB is not complying with the stipulated criteria or requirements.
  - c. it is guilty of any offence involving fraud or dishonesty.
  - d. DA concludes that there is a just cause for withdrawing the designation.
- 15.2 A CAB/CB whose designation, and recognition in case of MRA, has been suspended or withdrawn shall be removed from the list of designated CABs/CBs, in case it fails to take corrective measures.
- 15.3 DA shall keep the designation of a Designated CAB/CB under suspension, until the completion of formal review process.

#### **16.0 AMENDMENT TO THE SCHEME**

- 16.1 DA reserves the rights to amend the scheme, as and when required, for the purpose of streamlining designation process.

**ANNEXURE 1 - APPLICATION FOR DESIGNATION OF CAB AND CB**

- 1.0 Please submit this form to ADG (DA), Telecommunication Engineering Centre, Khurshid Lal Bhavan, Janpath, New Delhi-110001, India together with the following documents
- a. Documentary proof as an entity legally identifiable and located in India
  - b. Certificate of Accreditation by NABL/NABCB indicating the scope of accreditation;
  - c. Organisational Structure and Staffing Chart;
  - d. Laboratory Layout;
  - e. Statement of testing facilities and test methods to be used for testing each particular technical regulation, standard or specification;
  - f. Sample copy of the test reports and/or certificates
  - g. Quality Manual
  - h. Copies of contractual arrangements with other Designated CABs (for CBs)
  - i. Checklist on technical competence
  - j. Relevant audited financial statements for the last 3 years, including past claims on CAB/CB arising from its operations, if any;
  - k. Application processing fee. The application will be processed and applicant will be advised on the additional fees, based on the scope for designation.
- 2.0 Payment should be made with a crossed Demand Draft payable to “A.O. (Cash), TEC, New Delhi”. The application-processing fee is not refundable.

Applicant's Name & Address:		Contact Name & Designation:
Telephone No:	Facsimile No:	E-Mail Address:

CAB's/CB's Name & Address
---------------------------

Product(s) and Standard(s)/Specification(s) thereof for which designation is sought: (if space is insufficient, please attach additional sheet(s))	
Product(s)	Applicable Standard(s)

<p><b>Agreement:</b> The Applicant agrees to</p> <ol style="list-style-type: none"> <li>a. Fulfil all conditions and meet all requirements in accordance with the procedures given under the Scheme for Designating Domestic CAB/CB for Conformity Assessment and Certification of telecommunication equipment, and</li> <li>b. Indemnify TEC, India, from and against all liabilities, damages, claims, cost and expenses incurred or sustained by TEC, India, as a result of any action taken by TEC, India, relating to the designation as CAB/CB.</li> </ol>
--

Applicant's Signature & Date  
 Name and Designation  
 Company's Stamp

**ANNEXURE 2 - LIST OF TEC'S TECHNICAL SPECIFICATIONS**

<b>Switching</b>		
1	ISDN Customer Premises Equipment Interface Requirements	IR/CPE-02/03.OCT2003
2	ISDN Network Termination (NT1)	IR/NT1-02/03.MAY2005
3	Interface Requirements of PABX for PSTN Connectivity	IR/PBX-04/01.AUG2008
4	Interface Requirement of Digital Exchange with STM-1 Interface	IR/PNI-04/01.JUL2004
5	Interface Requirements of a Switching Node with Network-Network interface at 2048 Kbps	IR/PNI-05/01.JUL2004
<b>Transmission</b>		
3	Interface Requirements for Interchange of Primary Rate at 2048 Kbps between networks	IR/DMX-05/01.MAR2002
4	Interface Requirements for Interchange of STM-1 signals at 155 Mbps between networks	IR/DMX-06/01.APR2002
<b>Satellite Transmission</b>		
1	Communication And Broadcast Networks in FSS	IR/CPE-03/01.JUL2003
<b>Information Technology</b>		
1	Customer Premises Equipment (CPE) for MPLS Network	IR/CPE-03/01.JUL2003
2	System Employing Computer Telephony Integration	IR/CTI-01/03.JAN2007
3	Interface Requirements Of ATM Access Equipment	IR/ATM-03/02.JAN2005
4	High Speed Line Drivers	IR/DCA-18/04.OCT2005
5	Interface Requirements for 2 Mbps Data Multiplexer	I/DCA-19/01.OCT99
6	Data Interface to G.703 Interface Converter	IR/DCA-20/01.JUL2001
7	Frame Relay Access Devices (FRAD)	IR/DCS-01/03.SEP2004
8	X.25 Data Equipment (X.25 Based Cards, Stand Alone X.25 PAD and Other Cards)	IR/DCS-02/04.APR2006
9	IP Based Integrated Media Gateway for NLD/ILD applications	IR/MGW-01/03.FEB2005
10	Interface Requirement for IP PABX for Private Use	IR/PPX-01/02.DEC2004
11	Interface Requirements of Remote Access Server (RAS)	IR/RAS-01/03.JAN2005
12	Interface Requirements for Router	IR/TCP-01/03.DEC2004
13	Interface Requirements for Broadband Networks	IR/ADS-03/01.JUL2003
<b>Customer Premises Equipment</b>		
1	Audio Conference Unit	G/ACU-01/01.AUG91
2	Attachments to the Telephones	IR/ATC-01/03.AUG2004
3	Charge Indicator For PCO Operation	IR/CHI-02/04.SEP2007
4	Conference Facility Device	IR/CON-01/02.MAY2004
5	Executive Telephone System	IR/ETS-03/01.SEP2002
6	Group 3 FAX Machine/Card	IR/FAX-01/04.SEP2002
7	H.323 / SIP Terminal for Private Use	IR/IPP-01/01.SEP2002
8	Key Telephone Systems (With One Model of Key Telephone)	IR/KTS-01/02.APR2003
9	Extension Line Jack Unit (ELJU)	IR/LJU-02/02.APR2003
10	Voice-band Data Modem	IR/MOD-03/03.OCT2003
11	V.90 Modem	IR/MOD-08/02.APR2004
12	V.90 Modem	IR/MOD-08/02.APR2004
13	Radio Modems in ISM Band	IR/MOD-10/02.JAN2005
14	V.92 Modem	IR/MOD-12/02.MAY2005
15	Multiline Telephone System	IR/MTS-02/01.JUL2000
16	Radio Paging Control Terminal (Part of Radio Paging System) with 1 Base Station	G/PAG-01/01.JUN90
17	Radio Paging System with PSTN	IR/PAG-04/02.JUN2004
18	Coin Box Telephone	IR/PCO-01/03.FEB2008
19	Coin Box Telephone Table Top Type for Secured Environment	IR/PCO-02/02.NOV2002
20	NSD/ISD Payphone	IR/PCO-10/02.NOV2005
21	Point of Sales (POS) terminal with PSTN/CDMA/GSM/GPRS interface	IR/POS-01/04.JAN2005
22	Terminals for connecting to PSTN	IR/PST-01/01.SEP2005
23	Subscribers Service Unit for Calling Line Identification Presentation (SSU for CLIP)	IR/SIU-02/03.OCT2003
24	SMS Phone for PSTN	IR/SMS-04/01.FEB2003
25	Cordless Telephone	IR/TCL-01/02.APR2002
26	Electronic Telephone Instruments	IR/TEL-01/03.JAN2003
27	2 Line Feature Phone	IR/TEL-04/02.JAN2003
28	Coupling Hearing AIDS to the Telephone Sets	IR/TEL-08/02.OCT2003
<b>Wireless Communication</b>		
1	CDMA 2000 1x Remote Stations	IR/RST-02/01.AUG2004
2	CDMA 2000 1x EV-DO Card	IR/RST-04/01.SEP2004

### **ANNEXURE 3 - CHECKLIST FOR TECHNICAL COMPETENCE OF CAB**

Whether the Conformity Assessment Body

- a. has all the Technical Specifications like TEC GR/IR/Standards and the International Specifications that are relevant to the specifications against which Designation is requested.
- b. has all the documents containing the test schedules and test procedures relevant to the specifications against which Designation is requested.
- c. has all the testing equipments required for assessing conformance to the specification against which Designation is requested.
- d. has the requisite technical staff in testing laboratory with sufficient knowledge about the operation of test equipment, test setup and test procedure to conduct various tests relevant to the specification against which Designation is requested.



#### **ANNEXURE 4 - CHECKLIST FOR TECHNICAL COMPETENCE OF CB**

Whether the Certification Body

- a. has all the Technical Specifications like TEC GR/IR/Standards and the International Specifications that are relevant to the specifications against which Designation is requested.
- b. has all the documents containing the test schedules and test procedures relevant to the specifications against which Designation is requested.
- c. has all the testing equipments required for assessing conformance to the specification against which Designation is requested.
- d. has the requisite technical staff in testing laboratory with sufficient knowledge about the operation of test equipment, test setup and test procedure to conduct various tests relevant to the specification against which Designation is requested.
- e. has the requisite technical staff with sufficient knowledge to understand and analyse the test reports relevant to the specification against which Designation is requested.